

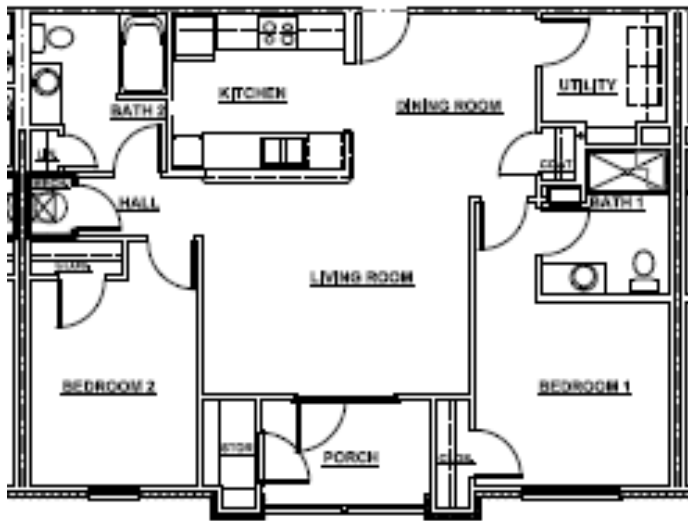
# Providence Park - 1700 Century Boulevard #3000, Opelika, AL

**Now  
Leasing!**



This 55 and better community is conveniently located just off U.S. Highway 280/Gateway Drive, Providence Park offers a quiet park-like living environment, yet city conveniences of stores, parks and schools are only minutes away. With spacious apartment homes and luxury amenities, Providence Park is more than just an apartment home community...it's a home with an escape from the busy world to a your personal secluded oasis!

## **2 Bedrooms**



### **Energy efficient apartment homes offering:**

- superior kitchens with electric range, refrigerator, dishwasher,
- ample storage,
- washer/dryer connections,
- and much more

### **Rental rates start at:**

**2 Bedrooms: \$ 585**

Rents to include water and sewer

## **Call**

# **334-610-4094**

**Providencepark2022@gmail.com**

### **A beautiful community offering:**

- clubhouse,
- community/computer room,
- fitness room,
- covered picnic pavilion,
- Gazebo,
- manicured landscaping,
- and more

**TDD (hearing impaired)#:**

**1-800-548-2546**

### **Directions:**

- From Hwy U.S. Highway 280 turn onto Thomason Drive, then turn east onto Century Boulevard
- Providence Park is located approximately 1/2 mile on the left

