

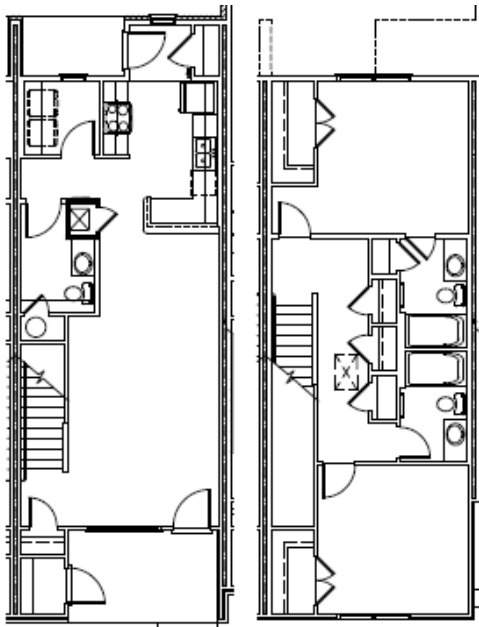
# Harper's Landing - 500 Doster Street, Enterprise, AL

**Now  
Pre-Leasing!**

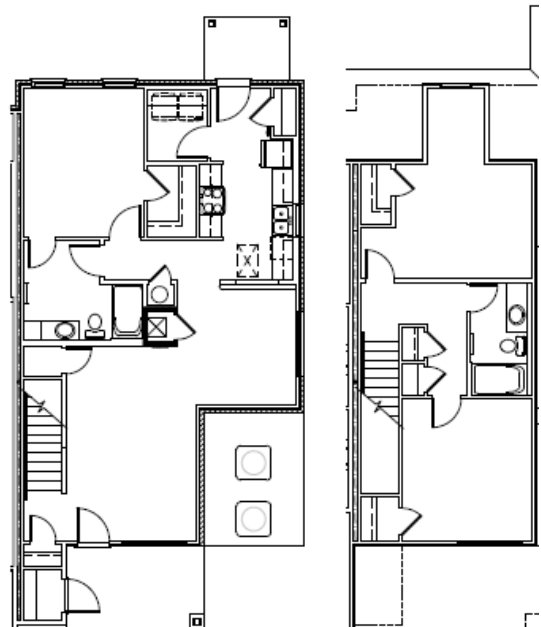


Conveniently located just off Geneva Highway, Harper's Landing offers a quiet park-like living environment, yet city conveniences of stores, parks and schools are only minutes away. With spacious apartment townhomes and luxury amenities, Harper's Landing is more than just an apartment townhome community... it's a home with an escape from the busy world to a your personal secluded oasis!

**2 Bedrooms**



**3 Bedrooms**



**Energy efficient apartment homes offering:**

- superior kitchens with electric range, refrigerator, dishwasher,
- ample storage,
- washer/dryer connections,
- and much more

**A beautiful community offering:**

- clubhouse,
- community/computer room,
- activity room,
- covered picnic pavilion
- manicured landscaping,
- and more

## Call

# 256-560-0821

[info@hollyhand.com](mailto:info@hollyhand.com)

[www.harperslandingtownhomes.com](http://www.harperslandingtownhomes.com)

**Rental rates:**

**2 Bedroom \$ 550**

**3 Bedroom \$ 650**

**TDD (hearing impaired)#:**

**1-800-548-2546**

**Directions:**

- From South Main Street/US-84 BUS turn right on Geneva Hwy /AL-27S for approximately 1 mile turning right on Doster Street
- Harper's Landing is located on the left

